

LAWYERS, REGS & MONEY: THE BREACH HAS HIT THE FAN

Moderator:

Larry Ponemon
Ponemon Institute, LLC

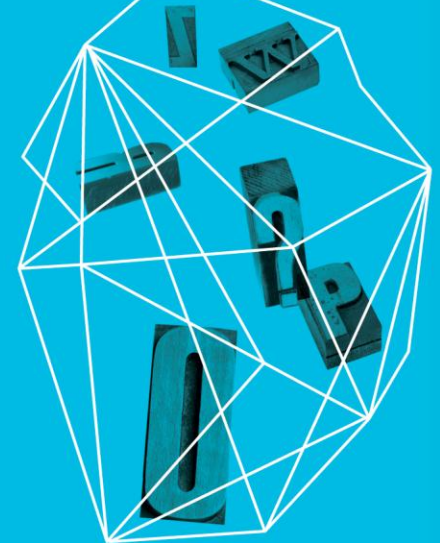
Panelists:

Gant Redmon
Co3 Systems, Inc.

Ellen Giblin
Ashcroft Law Firm

Gregory Leffard
The Hartford

Security in
knowledge



— On the Docket

- ▶ In a breach environment of when, not if, what does data loss preparedness mean?
- ▶ Now that your data is “in the wild” who are you responsible to, and what do you owe them?
- ▶ Regulation: Friend, Foe or “Frenemy?”
- ▶ From Remediation to Reparations: How many bucks stop here?
- ▶ Crystal Balls: State vs. Fed Regulation, who wins?